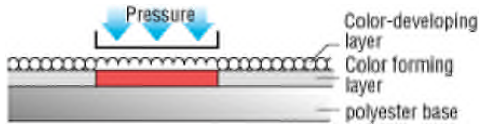


MAIN PRODUCTS

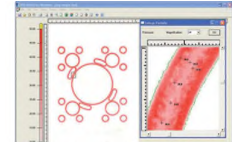
NEW INTRODUCTION

(10a) Films for pressure measurement

The problem of measuring pressure and pressure distribution accurately over an area can easily be solved with this colour changing film. Areas of the film where pressure is applied become red and the colour density varies according to the intensity of the applied pressure. The density of red allows visual evaluation of the strength of the pressure. Also, scanning allows a quantifiable pressure map analysis in colour to be performed. This method is very helpful with many machining applications offering better quality and less scrap.

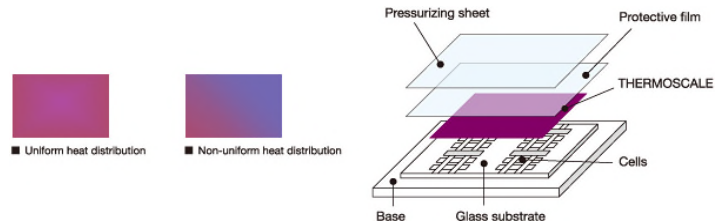


[Software FPD-8010E](#)



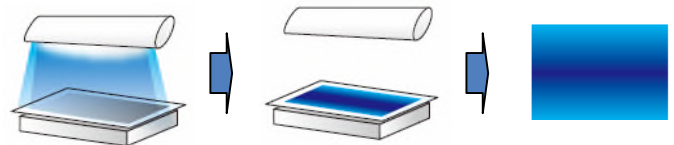
(10b) Films for temperature measurement

THERMOSCALE 200C is a temperature sensitive film between 150 °C and 210 °C, with the thickness of normal paper, indicating temperature variations in the seal. When heat and pressure is applied, the intensity and the heat distribution will be revealed by a colour change in the paper. High and low temperature areas can be controlled with this test material. Quality is improved and scrap reduced paying back test costs.



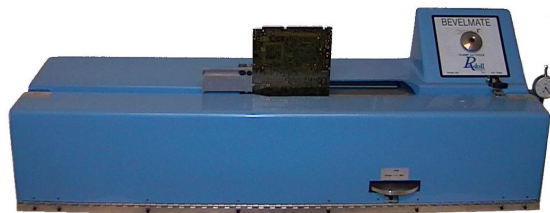
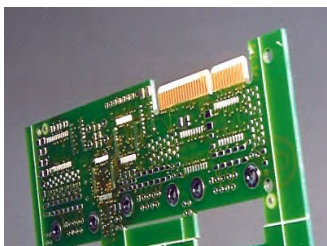
(10c) Films for UV-Light measurement

The new innovative UV-Light volume distribution visualization film UVSCALE that enables you to easily determine the ultraviolet light volume distribution by checking the change in colour. Applies to wavelengths in the 200 - 420 nm range (UV-A/B/C).



MECHANICAL EQUIPMENT

(34a) Connector bevelling and edge polishing machines



[Bevelmate](#)

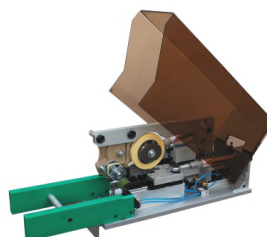


[Edgемate](#)

(30d) Stacking machines, drilling + pinning + taping + pin removal



SPINTRONIC stacker: drilling, pin insertion.
PAKTRONIK stacker without drilling.



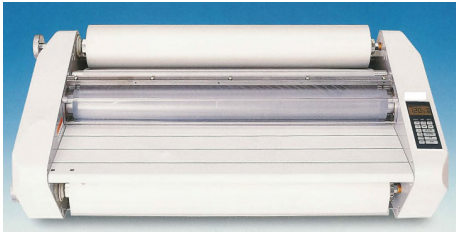
UNO-TAPER Single headed taping. The panel stack is pressed during taping.



DUO-TAPER double headed taping, less hand movements, doubles production, fast payback.

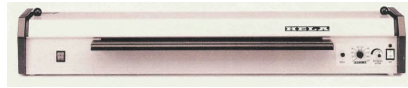
PHOTO + SCREEN PRINTING, CLEAN ROOM ITEMS

[\(15a\) Film + Resist Lamination](#)



Temperature controlled + protect film unwinder.

[\(15d\) DIAZO Developer](#)



For faster production.

[\(43a\) Nylon gloves](#)



Quality version with/without PU-coating, or conductive with carbon or copper threads.

[\(52a\) UV-Installations](#)



Exposure machines and dryers.

[\(52b\) Air dryer](#)



Temperature from 50 to 200°C.

[\(55c\) Embossed Mylar](#)



In antistatic.

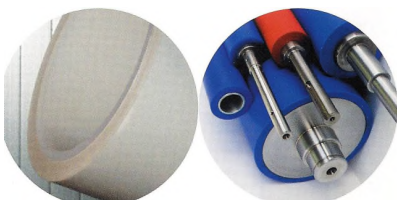
[\(55d\) DUST-TAK wipers and ROLL-TAK dust removers](#)



[\(58a\) Dust cleaning machines](#)



[\(58b\) TAK-adhesive + polymer rolls](#)



For all dust cleaning machines.

[\(62a\) MOFISTO Storage](#)



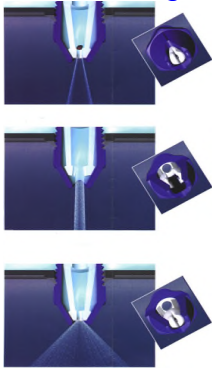
The safest film and screen storage, now available with conductive bags.

[\(70c\) Film punch equipment](#)



WET PROCESS + SURFACE TREATMENT

[\(23a\) Self cleaning nozzles](#)



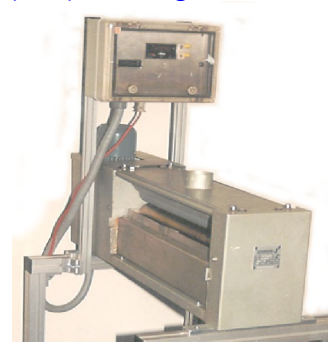
Less maintenance, life time up to 4 years.

[\(54b\) Brush TURBO-filter](#)



TURBO filter for dry residue.

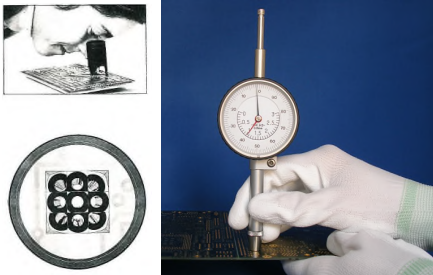
[\(38c\) Tinning machines](#)



Single sided roll tinning.
Hot oil tinning, less energy consumption.

CONTROL + TEST EQUIPMENT, OTHERS

[\(20a\) Hole inspector/micrometer](#)



Hole inspector:
Portrayal of 8 inner wall lines in one glance.
Hole micrometer, analogue or digital:
Measuring small diameter holes from 0,5 to 3mm.

[\(20b\) Scoring control gauge](#)



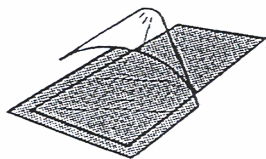
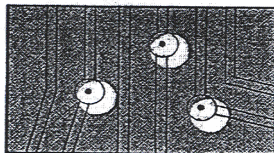
Accurately checks score depth.

[\(55b\) MOCHECK control film](#)



Form stable film for checking punched and drilled holes for tool breakage of flexible circuits.

[\(19g\) Printing control film](#)



Transparent screen and inkjet printing set up film.

[\(20c\) CU-MASTER](#)



Exact Cu thickness measuring.

[\(20e\) Glass ruler](#)



Maximum length error 0,013 mm within 500 mm.

[\(21a\) Circuit control + repair station](#)



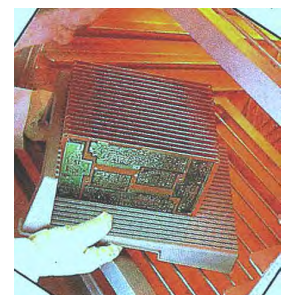
Inner layer etch repair by welding reduces scrap cost and delayed delivery.

[\(21h\) Repair ribbons + laser pre-cut form cards](#)



Weld ribbons for circuit repair with anti-oxidation coat in silver or gold, from 50 μ width in many sizes available.

[\(67a\) PCB racks](#)



Available in white or conductive in black.

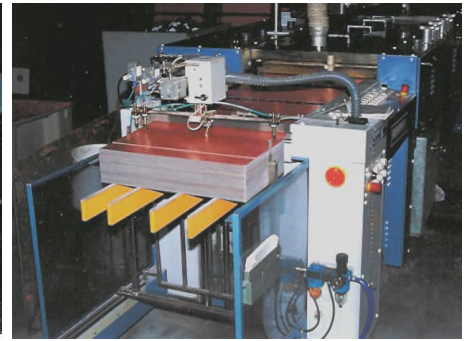
SECOND HAND EQUIPMENT REFURBISHED ON REQUEST



SCHMOLL 2-spindel CNC drilling and routing



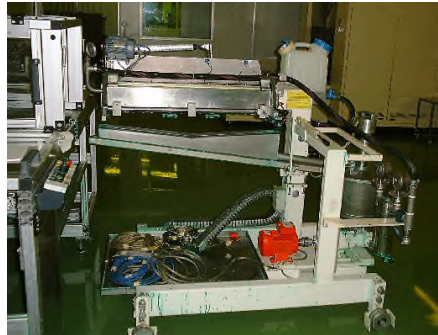
SCHMID etch machine or modules



SCHMID unloader, model 804



SCHMID with 14 trolleys for 50 panels/ea.



BÜRKLE curtain lack applicator



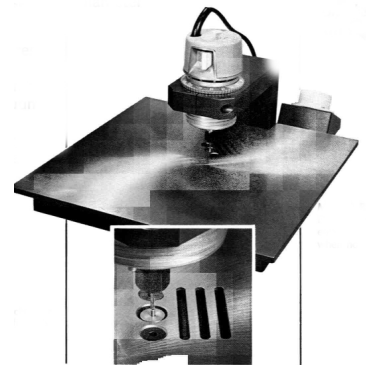
SACK UV-exposure 5 kW, surface 92 x 72 cm



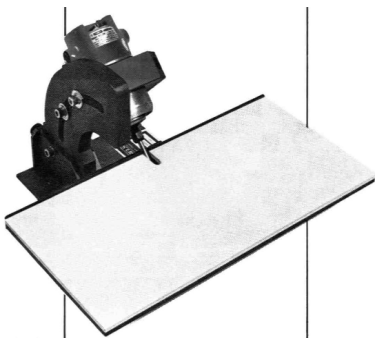
SPARTANICS registration punch



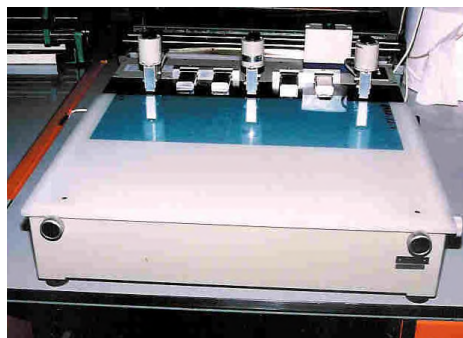
MODERNE hot oil levelling



Contour router



Bevelling router table 203 x 390mm



KELLER film registration punch

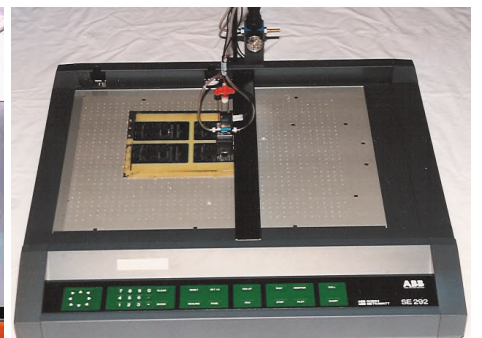


ABB CNC Dispense plotter 420 x 594mm area

Please ask for our list with more detailed information.
On stock we also have pump parts, spindles and additional spare parts.



MODERNE elemat GmbH Telefon: ++49-(0)711-753024
Postfach 23 03 42 Telefax: ++49-(0)711-753332
D-70623 Stuttgart E-mail: moderne@moderne.de
GERMANY Internet: www.moderne.de